

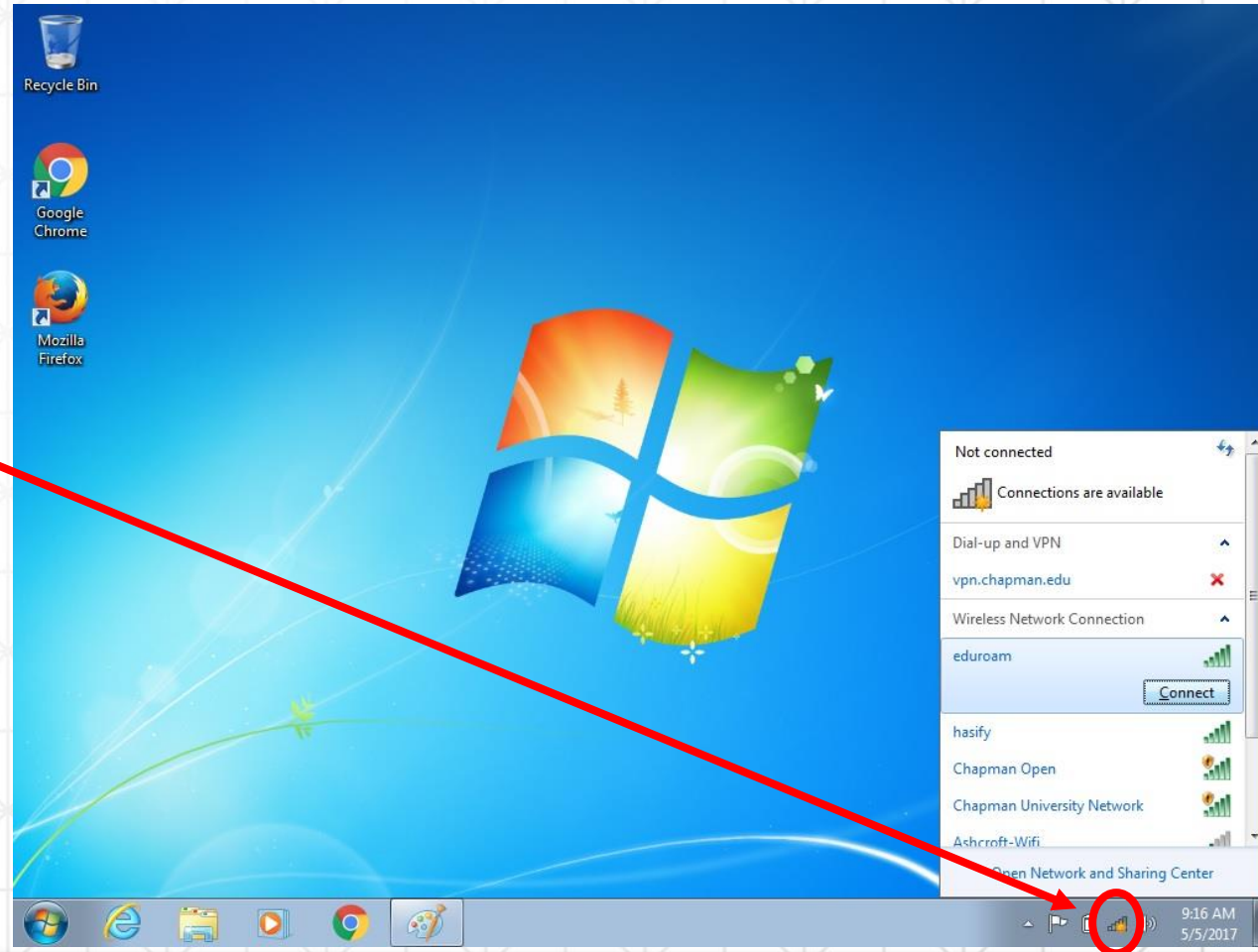
# Eduroam

## Setup Guide For Windows 7 Laptops

# Windows 7 Setup

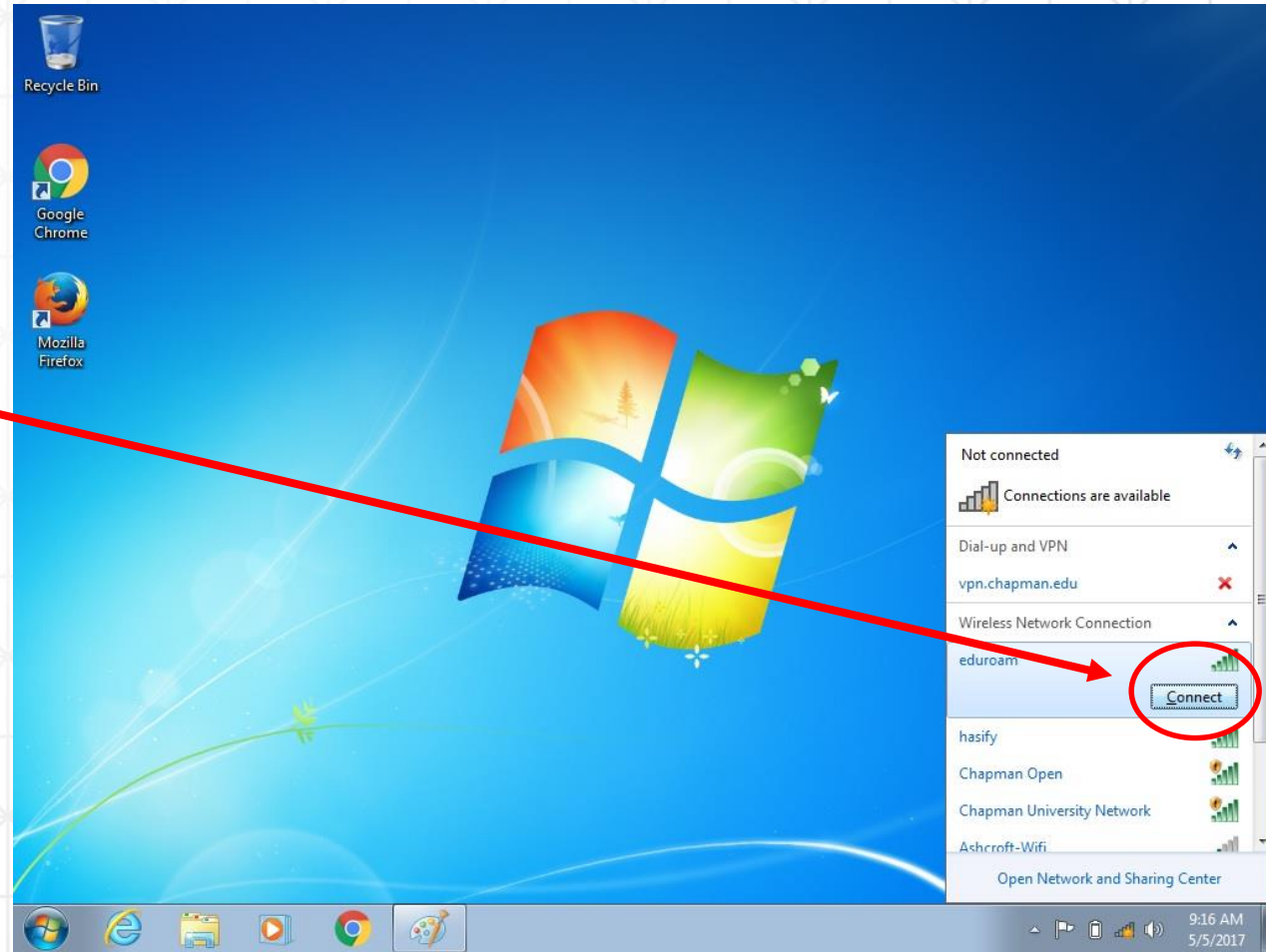
- 1) Open your “**Network and Sharing Center**” menu, located at the bottom right side of the screen.

Tip:  
You are looking for  
this icon



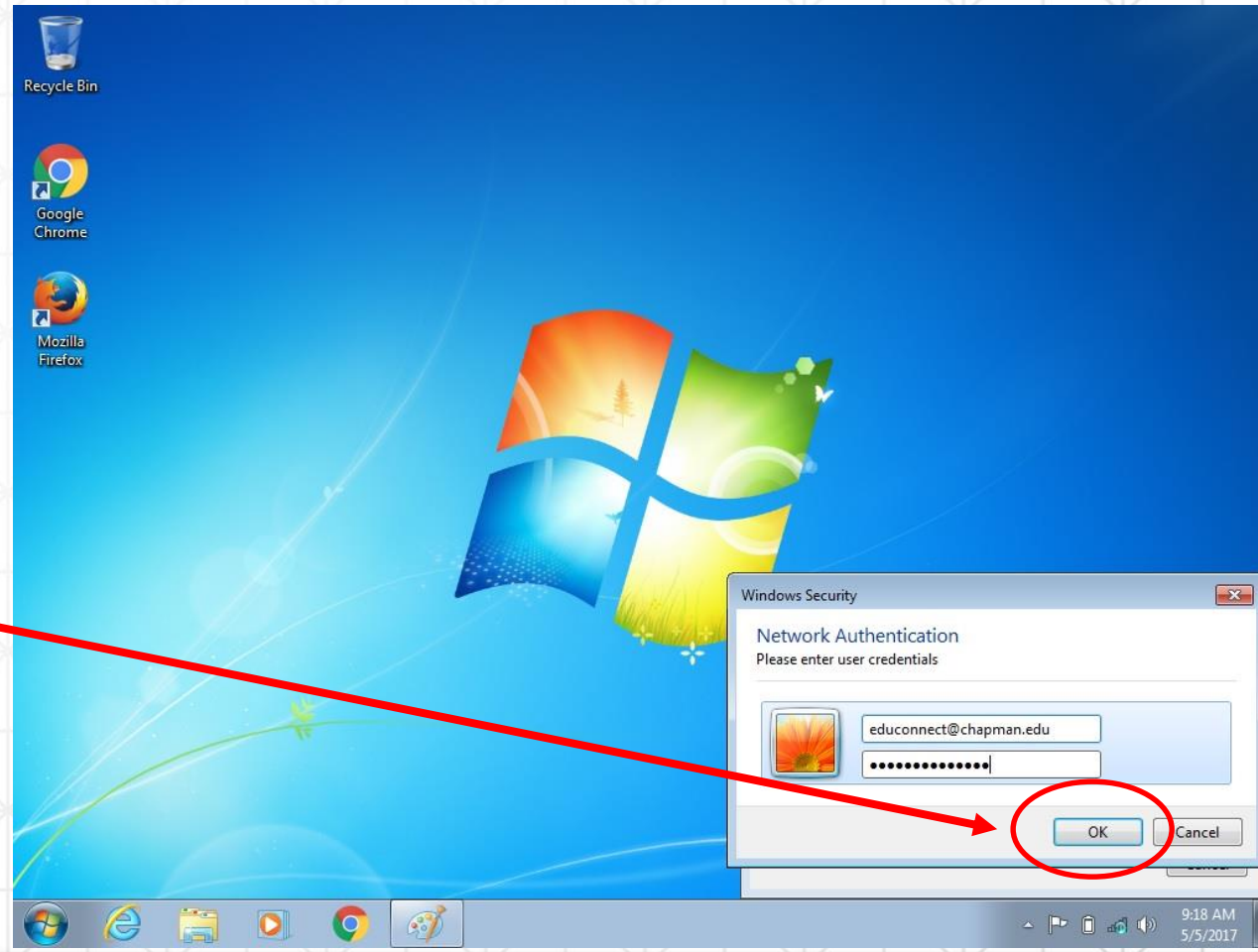
# Windows 7 Setup

- 1) Open your “**Network and Sharing Center**” menu, located at the bottom right side of the screen.
- 2) Locate the Eduroam network and click “**connect**”.



# Windows 7 Setup

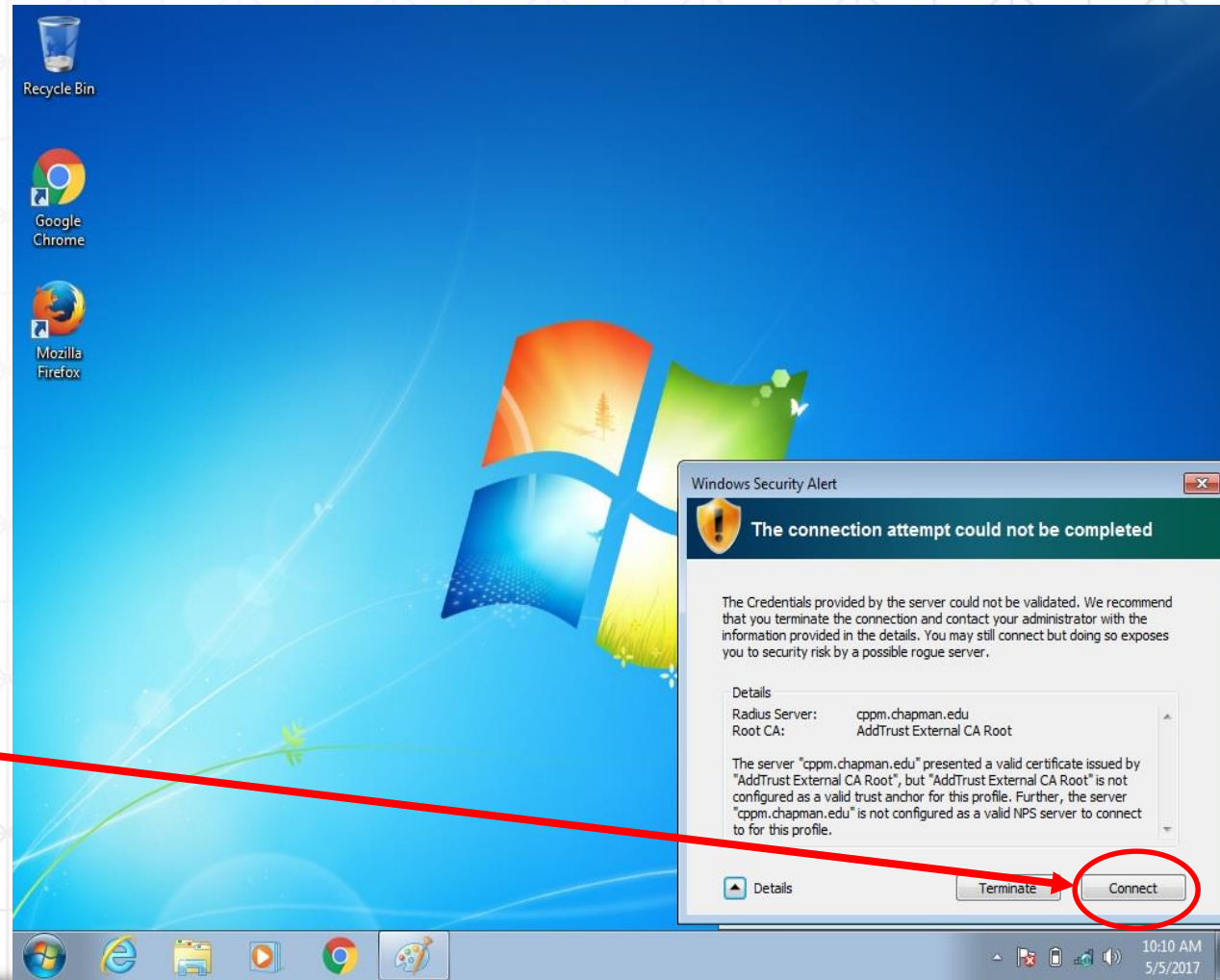
- 1) Open your “**Network and Sharing Center**” menu, located at the bottom right side of the screen.
- 2) Locate the Eduroam network and click “**connect**”.
- 3) Enter your full Chapman email address and password. Then click “**OK**”



# Windows 7 Setup

- 1) Open your “**Network and Sharing Center**” menu, located at the bottom right side of the screen.
- 2) Locate the Eduroam network and click “**connect**”.
- 3) Enter your full Chapman email address and password. Then click “**OK**”
- 4) You will need to “**Trust**” the network certificate by clicking on “**Connect**”.

The warning message is letting you know you are trusting Chapman’s authentication server.



# Windows 7 Setup

- 1) Open your “**Network and Sharing Center**” menu, located at the bottom right side of the screen.
- 2) Locate the Eduroam network and click “**connect**”.
- 3) Enter your full Chapman email address and password. Then click “**OK**”
- 4) You will need to “Trust” the certificate by clicking on “**Connect**” Disregard the warning message.

You should now be connected!

