



SNAPSHOT

June 2022

AN INFOGRAPHIC NEWSLETTER OF THE INSTITUTIONAL RESEARCH AND DECISION SUPPORT (IRADS) OFFICE

2021 COLLEGE SENIOR SURVEY (CSS)

Each year, thousands of students across the United States complete the College Senior Survey, a national survey from the Higher Education Research Institute at UCLA. The CSS was administered in the spring of 2021 when most students were participating in online learning and had limited campus access due to the COVID-19 pandemic. The results in this newsletter profile Chapman University's graduating class of 2021. Over 258 graduating seniors completed the survey online resulting in a 14% response rate.

ACTIVITIES DURING COLLEGE

- 72.6% Had a roommate of a different race/ethnicity
- 62.0% Participated in an internship program
- 53.1% Held a leadership position in an organization
- 41.7% Joined a fraternity or sorority
- 41.1% Attended a racial/cultural awareness workshop
- 28.6% Participated in study abroad
- 20.0% Participated in an undergraduate research program



DIVERSITY-RELATED STRENGTHS

Percent reporting "Somewhat Strong" or "A Major Strength" on a 5-point scale

- 97.0% Ability to work cooperatively with diverse people
- 91.6% Ability to see the world from someone else's perspective
- 84.2% Tolerance of others with different beliefs



FACULTY-STUDENT INTERACTION

Percent reporting, on a 3-point scale, that professors frequently provide them with:

- 52.9% Encouragement to discuss coursework outside of class
- 46.5% Encouragement to ask questions and participate in discussions
- 44.8% Help in achieving professional goals
- 40.1% Feedback on academic work (outside of grades)
- 39.5% Encouragement to pursue graduate/professional study
- 37.8% Advice and guidance about educational programs



CAMPUS CLIMATE

Percent reporting "Agree" or "Strongly Agree" on a 5-point scale

- 35.2% Chapman University is an institution that values diversity
- 64.2% Faculty members at Chapman University make an effort to create inclusive and welcoming classroom environments

Percent reporting "Very Descriptive" on a 3-pt scale

- 23.8% There is respect for other expressions of diverse values and beliefs at Chapman University

CHAPMAN UNIVERSITY CONTRIBUTED TO MY...

Percent reporting "Agree" or "Strongly Agree" on a 4-point scale

- 95.7% Intellectual and practical skills
- 92.0% Problem-solving skills
- 82.8% Ability to conduct research
- 69.7% Understanding of global issues
- 69.1% Understanding of national issues
- 66.8% Knowledge of people from different races/cultures



SENSE OF BELONGING AND INCLUSION

Percent reporting "Agree" or "Strongly Agree" on a 4-point scale

- 78.3% Felt like a member of Chapman University
- 75.4% Felt valued at Chapman University
- 69.1% Felt a sense of belonging to campus
- 61.1% Felt there was a lot of racial tension on campus



CIVIC ENGAGEMENT

Percent reporting "Yes"

- 88.0% Voted in a national, state or local election

Percent reporting "Occasionally" or "Frequently" on a 3-pt scale

- 93.0% Discussed politics
- 49.5% Performed volunteer or community service work
- 60.9% Helped raise money for a cause or campaign



MENTAL HEALTH, INSECURITY AND CHALLENGES WHILE IN COLLEGE

Percent reporting "Frequently"

- 66.3% Felt overwhelmed by all I had to do
- 64.5% Felt anxious
- 38.0% Felt depressed
- 20.5% Sought personal counseling
- 8.1% Contributed money to help support my family
- 6.5% Felt hungry but didn't eat because I didn't have enough money for food



Since entering college:

Percent reporting "Yes"

- 21.1% Held a full-time job (approx. 40 hrs) while taking classes
- 1.7% Been homeless for at least one month

LIFE AFTER COLLEGE

Percent reporting "Yes"



75.0% Plan to work full-time after graduation

80.9% Feel prepared for employment
(Percent reporting "Agree" or "Strongly Agree")

20.4% Plan to attend graduate school full-time after graduation

84.5% Feel prepared for graduate or advanced education
(Percent reporting "Agree" or "Strongly Agree")

WHAT IS IMPORTANT TO SENIORS WHEN CONSIDERING A CAREER PATH?

Percent reporting "Very Important" or "Essential" on a 4-point scale

- 87.7%** Stable, secure future
- 86.5%** Work/life balance
- 83.4%** Availability of jobs
- 77.6%** Expression of personal values
- 75.5%** Leadership potential
- 69.8%** Ability to pay off debt
- 69.1%** High income potential
- 65.6%** Creativity and initiative

CAREER GOALS

Percent reporting "Very Important" or "Essential" on a 4-pt scale

- 51.5%** Obtaining recognition from my colleagues for contribution to my special field
- 47.4%** Becoming a community leader
- 29.2%** Creating artistic work
- 22.8%** Writing original works (poems, novels, etc.)



ARTIST SELF-CONCEPT

Percent reporting "Agree Somewhat" or "Strongly Agree" on a 5-point scale



39.4%

I think of myself as an artist

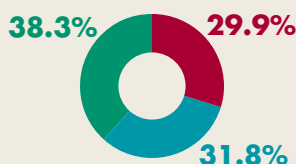


32.7%

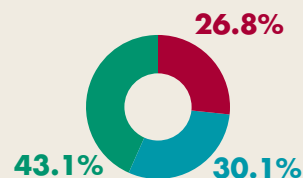
I have a strong sense of belonging to a community of artists

RESEARCH AND CREATIVE ACTIVITY

■ Frequently ■ Occasionally ■ Not at all



How often did professors provide you with an **opportunity to work** on a research project or creative activity (e.g., an original piece of film, dance, music, creative writing, or other)?

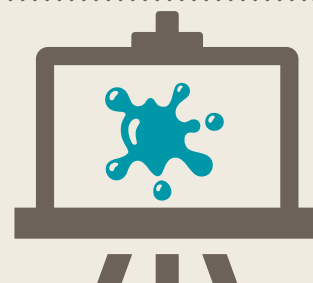


Since entering college, how often did you **work collaboratively** on a research project or creative activity with a professor?

51.0%

Satisfaction with the encouragement and support you received from Chapman faculty to do research and/or participate in creative activities.

Percent reporting "Satisfied" or "Very Satisfied" on a 5-point scale



WILL YOU PURSUE A SCIENCE-RELATED RESEARCH CAREER?

- 8.9%** Definitely yes
- 8.3%** Probably yes
- 11.9%** Uncertain
- 27.4%** Probably no
- 43.5%** Definitely no



ALUMNI ENGAGEMENT

Percent reporting "Agree" or "Strongly Agree" on a 4-pt scale

DONATE



33.7%

I will give Chapman University money as an alum



51.1%

I plan to remain engaged with Chapman as an alum (e.g., campus events, fundraising, admissions)

SCIENCE SELF-CONCEPT

Percent reporting "Agree Somewhat" or "Strongly Agree" on a 5-point scale

- 43.9%** I derive great personal satisfaction from working on a team that is doing important research
- 24.4%** I have a strong sense of belonging to a community of scientists
- 20.7%** I think of myself as a scientist
- 23.2%** I feel like I belong in the field of science



SATISFACTION

Percent reporting "Satisfied" or "Very Satisfied" on a 5-point scale

74.0% Overall college experience

Percent reporting "Strongly Agree" or "Agree" on a 4-point scale

77.8% If asked, I would recommend this college to others

Prepared by: Chapman's Institutional Research and Decision Support (IRADS)
Chapman.edu/irads