

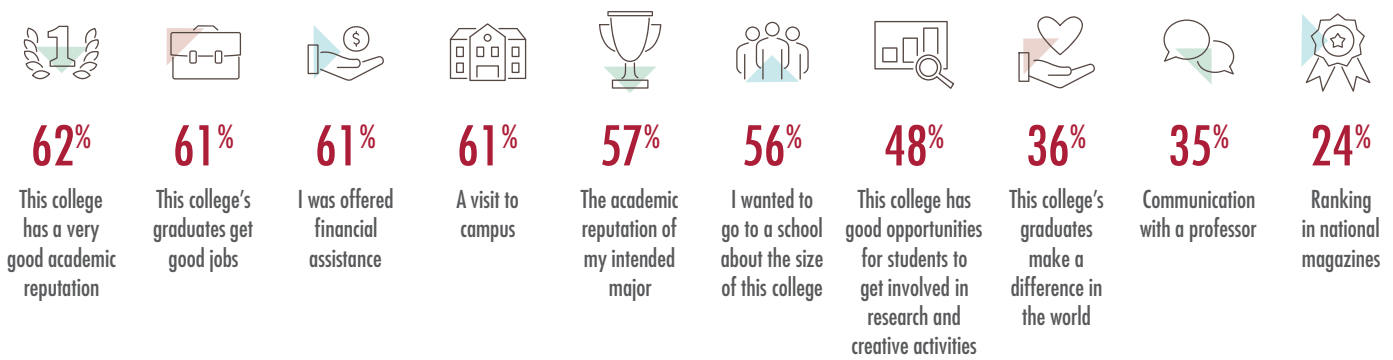
SNAPSHOT

AN INFOGRAPHIC NEWSLETTER OF THE INSTITUTIONAL RESEARCH AND DECISION SUPPORT (IRADS) OFFICE

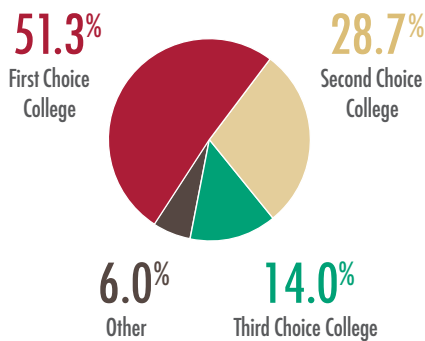
2023 CIRP FRESHMAN SURVEY

Each year thousands of students across the United States complete the CIRP Freshman Survey. The results in this newsletter profile Chapman University's 2023 first-time, full-time entering students. Over 2,000 incoming first-year students completed the online survey resulting in a 38% response rate.

REASONS FOR CHOOSING CHAPMAN Percent reporting "Very Important" reason on a 3-pt scale



CHAPMAN UNIVERSITY WAS?



COLLEGE EXPECTATIONS

Percent reporting "Very Good Chance" on a 4-pt scale

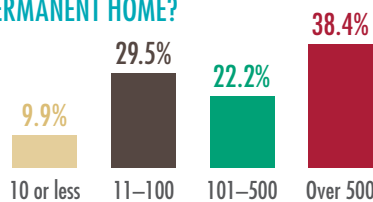
- 67.0%** Participate in student clubs/groups
- 53.8%** Get a job to help pay college expenses
- 46.9%** Study abroad
- 34.6%** Get tutoring help
- 22.1%** Join a fraternity/sorority

WHY GO TO COLLEGE AT ALL?

Percent reporting "Very Important" reason on a 3-pt scale

- 87.8%** Learn about things that interest me
- 76.9%** Gain general education and appreciation of ideas
- 73.7%** Get a better job
- 73.0%** Get training for a specific career
- 64.2%** Make more money
- 53.3%** Make me a more cultured person
- 49.9%** Prepare for graduate/professional school
- 33.0%** To please my family

HOW MANY MILES IS CU FROM YOUR PERMANENT HOME?



INSECURITY, INSTABILITY AND CHALLENGES ENTERING COLLEGE

Percent reporting "Frequently" on a 3-pt scale

- 50.7%** Felt overwhelmed by all I had to do
- 48.4%** Felt anxious
- 15.9%** Felt depressed
- 2.9%** Felt hungry but did not eat because I didn't have enough money for food

Percent reporting "Very Good Chance" on a 4-pt scale

- 24.6%** Seek personal counseling



Do you have any concerns about your ability to finance your college education?



CIVIC ENGAGEMENT WHILE IN COLLEGE

Percent reporting "Very Good Chance" on a 4-pt scale

66.3%

Vote in a local, state or national election

33.6%

Participate in volunteer or community service work

12.4%

Participate in student protest or demonstration

DIVERSITY-RELATED STRENGTHS

Percent reporting "A Major Strength" or "Somewhat Strong" on a 5-pt scale

90.8% Ability to work cooperatively with diverse people

80.3% Ability to see the world from someone else's perspective

78.9% Tolerance of others with different beliefs

67.8% Openness to having own views challenged

65.8% Ability to discuss and negotiate controversial issues



DIVERSITY-RELATED BELIEF

Percent reporting "Agree" or "Agree Strongly" on a 5-pt scale

76.5% Chapman University is an institution that values diversity, equity and inclusion

DEGREE ASPIRATIONS



38.4%

Plan to pursue a Master's Degree



7.6%

Plan to pursue a Medical Degree



4.2%

Plan to pursue a Law Degree



10.1%

Plan to pursue a Doctorate Degree (Ph.D., Ed.D., etc.)

CAREER GOALS

Percent reporting "Essential" or "Very Important" on a 4-pt scale

58.0% Obtaining recognition from my colleagues for contributions to my special field

53.1% Becoming an authority in my field

46.5% Becoming successful in a business of my own

26.0% Becoming accomplished in one of the performing arts

SOCIAL MEDIA & TV

Percent reporting spending 11 or more hours a week



37.8%

Using social media



24.4%

Watching TV/online video content (e.g., Amazon, Hulu, Netflix, YouTube)



7.9%

Playing video games

RESEARCH INCLINATION

Percent reporting "Agree" or "Agree Strongly" on a 5-pt scale

57.9% I am interested in getting involved on a research project or creative activity with a faculty member.

What is the best guess as to the chance that you will work on a professor's research project?

22.1%

Very Good Chance

48.1%

Some Chance

25.0%

Very Little Chance

4.8%

No Chance

FUTURE GOALS

Percent reporting "Essential" or "Very Important" on a 4-pt scale

87.5% Being very well off financially

75.5% Helping others who are in difficulty

61.9% Raising a family

47.8% Helping promote racial understanding

43.9% Influencing social values

16.4% Influencing the political structure



TRANSITION TO CHAPMAN

Percent reporting "Agree Somewhat" or "Strongly Agree" on a 4-pt scale

95% The admission staff responded to my questions in a timely manner.

93% The communication I received from Chapman regarding enrollment was clear.

93% I am pleased with how my on-campus housing arrangement worked out.

89% Orientation for new students has made me feel connected to Chapman.

86% Financial aid office staff explained the details of my financial package.

SELF-PERCEPTIONS

Percent reporting "Above Average" and "Highest 10%" compared to peers their age

67.4%

Academic Ability

60.0%

Creativity

60.1%

Leadership Ability

41.8%

Self-confidence (intellectual)

42.9%

Artistic Ability

34.7%

Self-confidence (social)

35.1%

Emotional Health